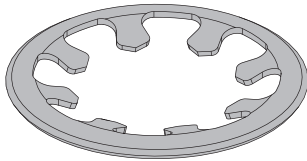




PUSH-IN FITTINGS FOR USE IN THE FOOD INDUSTRY

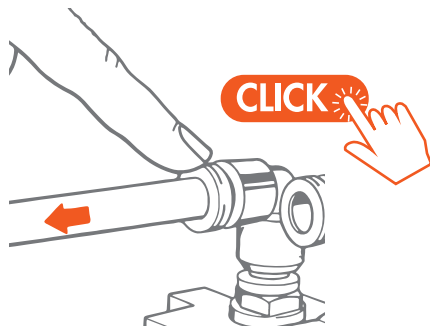
Series F-E PLUS and Series F-NSF PLUS

STAINLESS STEEL PIPE GRIPPER



The pipe is crimped by numerous radially arranged stainless steel teeth: excellent retention of pipes made of various materials, even under pulsating pressure.

SNAP-ON TUBE RELEASE SYSTEM



If you press the release bushing with your fingers, you will hear the characteristic clicking sound: this means that the pipe can be pulled out without difficulty.



PUSH-IN FITTINGS FOR USE IN THE FOOD INDUSTRY

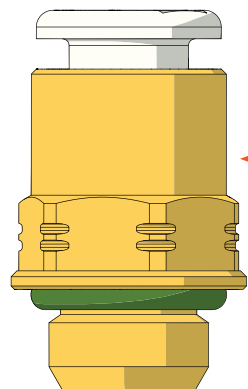
Series F-E PLUS and Series F-NSF PLUS

TEMPERATURE



For temperatures up to 150°C

MAIN USED MATERIALS



- ← Release bushing and retaining sleeve made up of technopolymer with high mechanical and thermal resistance properties.
- ← F-E PLUS body in unleaded brass treated.
F-NSF PLUS body in low-lead brass.
- ← Viton® seals



PUSH-IN FITTINGS FOR USE IN THE FOOD INDUSTRY

Series F-E PLUS and Series F-NSF PLUS

Series F-E PLUS



Use in contact with food.
Complies with:

- Regulation 1935/04 EU (MOCA)
- Regulation 2023/06 EU (MOCA)



Standard brass body, with RUVECO® surface lead leaching and protective treatment with T.E.A.® intermetallic alloy.

Series F-NSF PLUS

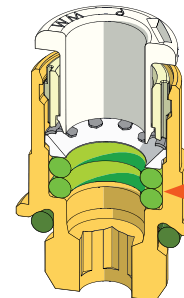


Use in contact with food and drinking water.
Fitting certified to NSF 169.
Brass certified to NSF 372.
Fitting complying with:

- DM 174
- Regulation 1935/04 EU (MOCA)
- Regulation 2023/06 EU (MOCA)



Low-lead brass, less than 0.1%
With additional RUVECO® surface lead leaching.



Two seals on the pipe.
Excellent for use with water to minimise the risk of leakage.